

# The Most Important Chess Pattern: Chance to Win, Draw, or Lose with the Right Move

In the vast and intricate world of chess, there are countless patterns and strategies that can influence the outcome of a game. However, among the myriad of elements that contribute to success, there is one pattern that stands out as the most crucial: the evaluation of chances.



**Opposition & Critical Squares: The most important Chess Pattern. A chance to win, draw or lose with the right Move. Just one: Can you afford not to know how?**

**(Chess manual)** by Rodolfo Pardi

★★★★☆ 4.3 out of 5

Language : English  
File size : 2172 KB  
Text-to-Speech : Enabled  
Screen Reader : Supported  
Enhanced typesetting : Enabled  
Print length : 135 pages  
Lending : Enabled



Every move in chess presents a choice, a fork in the road that can lead to different outcomes. By understanding the pattern of chances, you can assess the potential consequences of your actions and make the best decision for your position.

## Identifying the Pattern

The pattern of chances is based on the following key factors:

- **Material advantage:** The number of pieces and pawns each player has.
- **Positional advantage:** The control of key squares, the development of pieces, and the king's safety.
- **Initiative:** The ability to dictate the flow of the game and force your opponent to react.
- **Tempo:** The efficiency of your moves and the ability to gain time on your opponent.

By considering these factors, you can determine the balance of power in the position and your chances of success.

## Exploiting the Pattern

Once you have identified the pattern of chances, you can exploit it to your advantage.

**If you have a clear advantage,** you should play aggressively to increase your chances of winning. This may involve attacking your opponent's pieces, opening lines for your own pieces, or advancing your pawns.

**If you are in a slightly better position,** you should focus on consolidating your advantage and preventing your opponent from equalizing. This may involve improving the position of your pieces, controlling key squares, or restricting your opponent's movement.

**If you are in a slightly worse position,** you should play defensively to minimize your losses and try to equalize. This may involve protecting your

king, avoiding unnecessary risks, and trading pieces to simplify the position.

**If you are in a clearly worse position,** you should focus on damage control and try to force a draw. This may involve giving up material or position to create counterplay or find perpetual check.

## Examples

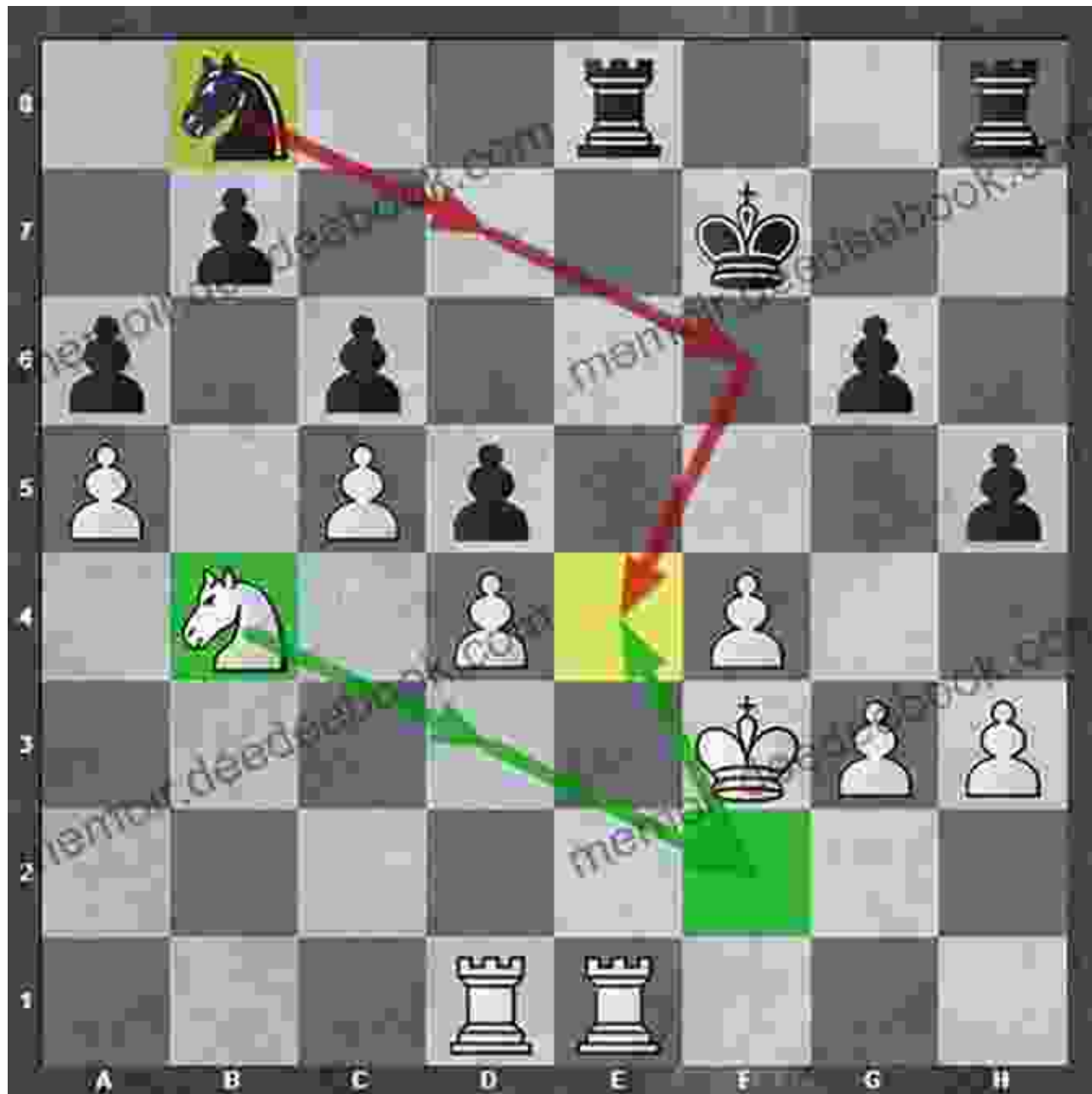
Let's examine a few examples to illustrate the application of the pattern of chances.

### Example 1: White to move



In this position, White has a clear material advantage. The bishop and pawn more than compensate for the missing knight. White should play aggressively to increase their chances of winning. The best move is 1. Rxb7+, which attacks the black queen and wins a pawn.

### Example 2: Black to move



In this position, Black has a positional advantage. The knight and bishop are well-placed, and the king is safe. Black should focus on consolidating this advantage and preventing White from equalizing. The best move is 1... Nc6, which controls the center and protects the king's pawn.

### Example 3: White to move



In this position, White is in a slightly worse position. The black pawns are advanced and threaten to create a passed pawn on the h-file. White should play defensively to minimize their losses and try to equalize. The best move is 1. Nd2, which protects the e-pawn and prevents Black from playing h5.

The pattern of chances is a fundamental concept in chess that can help you assess your position and make the best decisions. By understanding this pattern, you can increase your chances of winning, drawing, or losing with the right move.

Remember, chess is a game of strategy and risk. There is no surefire way to win every game. However, by understanding the pattern of chances, you can improve your decision-making and make the most of every opportunity.



## **Opposition & Critical Squares: The most important Chess Pattern. A chance to win, draw or lose with the right Move. Just one: Can you afford not to know how?**

**(Chess manual)** by Rodolfo Pardi

★★★★☆ 4.3 out of 5

Language : English  
File size : 2172 KB  
Text-to-Speech : Enabled  
Screen Reader : Supported  
Enhanced typesetting : Enabled  
Print length : 135 pages  
Lending : Enabled



## **How to Get a Woman to Pay for You: A Comprehensive Guide to Strategies, Considerations, and Success**

In the modern dating landscape, navigating financial dynamics can be a delicate subject. However, with careful consideration and open communication,...



## Principles and Theory for Data Mining and Machine Learning by Springer

Data mining and machine learning are two of the most important and rapidly growing fields in computer science today. They are used in a wide variety of applications, from...