

Locomotive Cyclopedia of American Practice 1922: A Technological Masterpiece

The Locomotive Cyclopedia of American Practice, published in 1922, stands as a monumental achievement in the annals of railway literature. This comprehensive encyclopedia provides an in-depth exploration of the locomotives that shaped the transportation landscape of the United States and beyond. With meticulous detail and unparalleled expertise, it offers a comprehensive overview of steam, electric, and gasoline-powered locomotives, their design, construction, performance, and operation.

Steam Locomotives: The Workhorses of the Rails

Steam locomotives, the backbone of railway transportation in the early 20th century, receive extensive coverage in the Locomotive Cyclopedia. It delves into various types of steam engines, including passenger, freight, switching, and specialized locomotives. The encyclopedia provides detailed descriptions of their components, from boilers and fireboxes to piston valves and running gear. It also discusses the evolution of steam locomotive design, from early bell-shaped boilers to the streamlined engines that emerged in the later years.



Locomotive Cyclopedia of American Practice: Locomotives, 1922 by Daiyu Chen

★★★★☆ 4.3 out of 5

Language : English
File size : 73020 KB
Text-to-Speech : Enabled
Enhanced typesetting : Enabled
Print length : 101 pages
Screen Reader : Supported

FREE

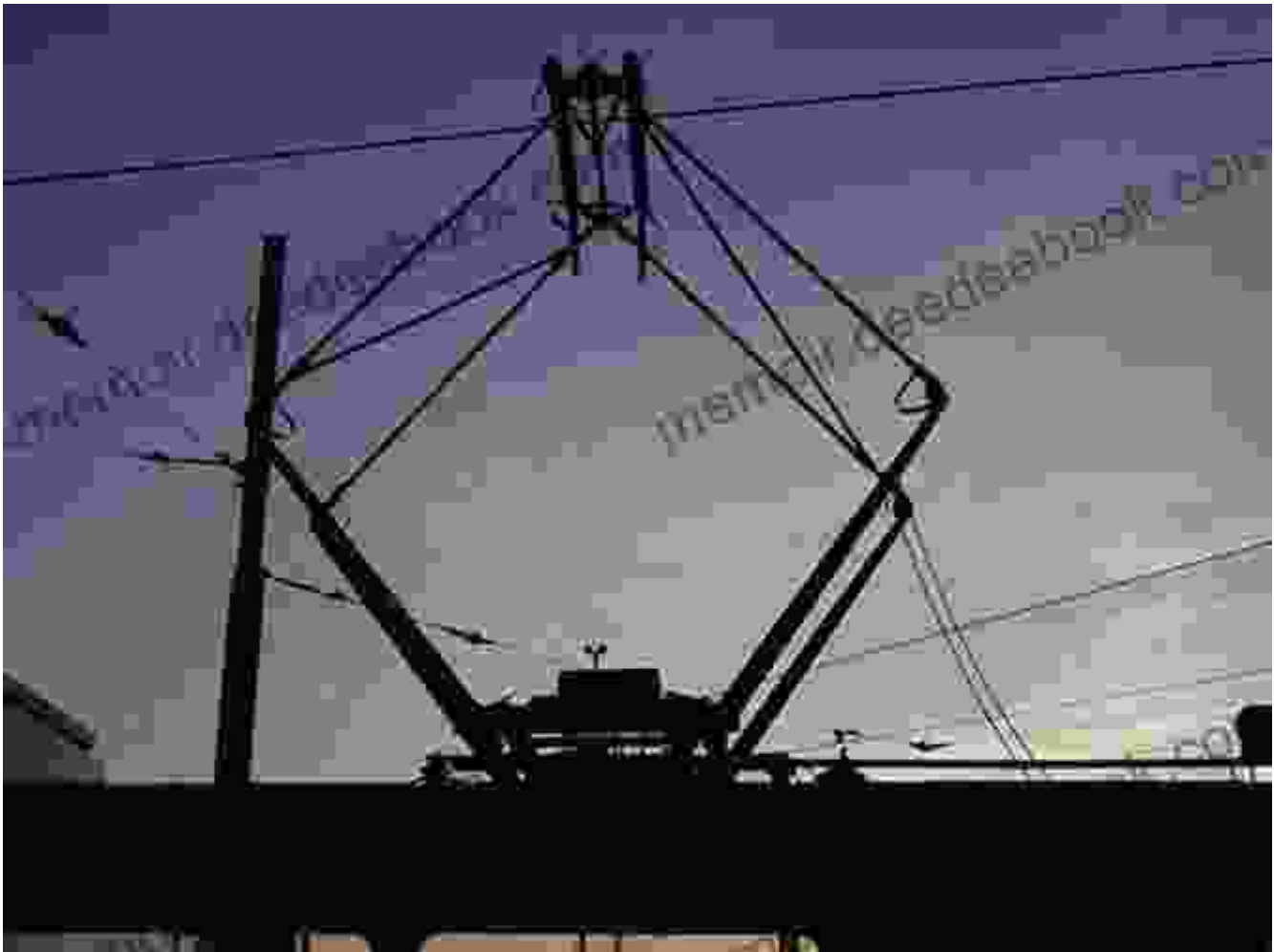
DOWNLOAD E-BOOK



Electric Locomotives: Pioneers of Electrical Traction

The Locomotive Encyclopedia also examines the emerging field of electric locomotives. It discusses the advantages and limitations of electric traction, comparing it to steam power. The encyclopedia provides technical

descriptions of electric motors, transformers, and control systems, showcasing the innovations that were driving the development of electric locomotives. It covers both mainline locomotives used for passenger and freight hauling, as well as industrial and mining locomotives designed for specific purposes.

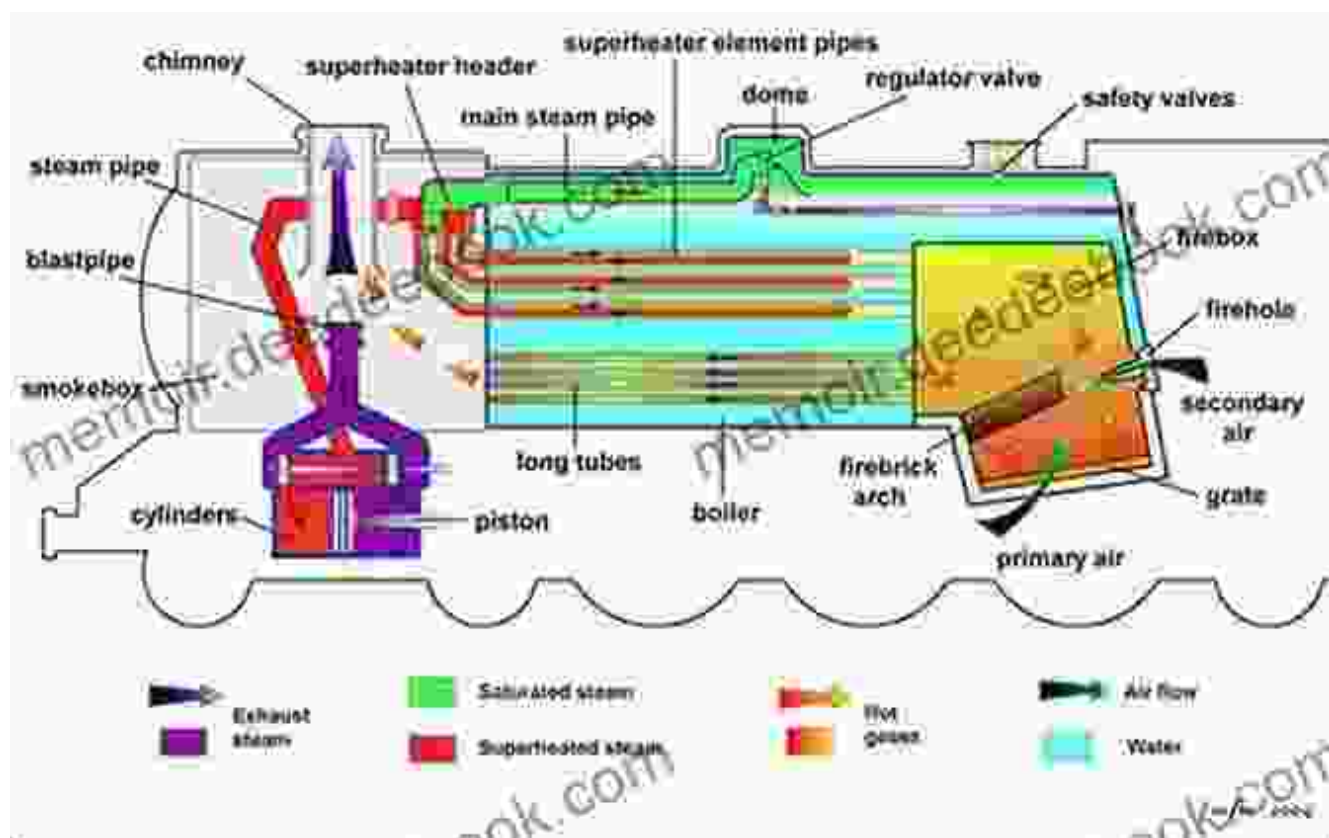


Electric locomotive from the Locomotive Cyclopeda of American Practice 1922

Gasoline-Powered Locomotives: A Niche for Versatility

While steam and electric locomotives dominated the railway scene, the Locomotive Cyclopeda also acknowledges the role of gasoline-powered locomotives. It provides detailed specifications and descriptions of these

versatile machines, which were primarily used in industrial settings, mines, and short-line railroads. The encyclopedia discusses their advantages in terms of maneuverability, low operating costs, and ability to operate in areas without access to electricity or coal.



Technical Insights and Historical Context

The Locomotive Cyclopedia of American Practice 1922 is not merely a catalog of locomotives. It provides invaluable technical insights into the design, construction, and operation of these machines. It includes detailed cross-sections, diagrams, and tables that illustrate the intricate workings of locomotives. The encyclopedia also delves into the historical context of locomotive development, tracing the evolution of technology and its impact on the railway industry.

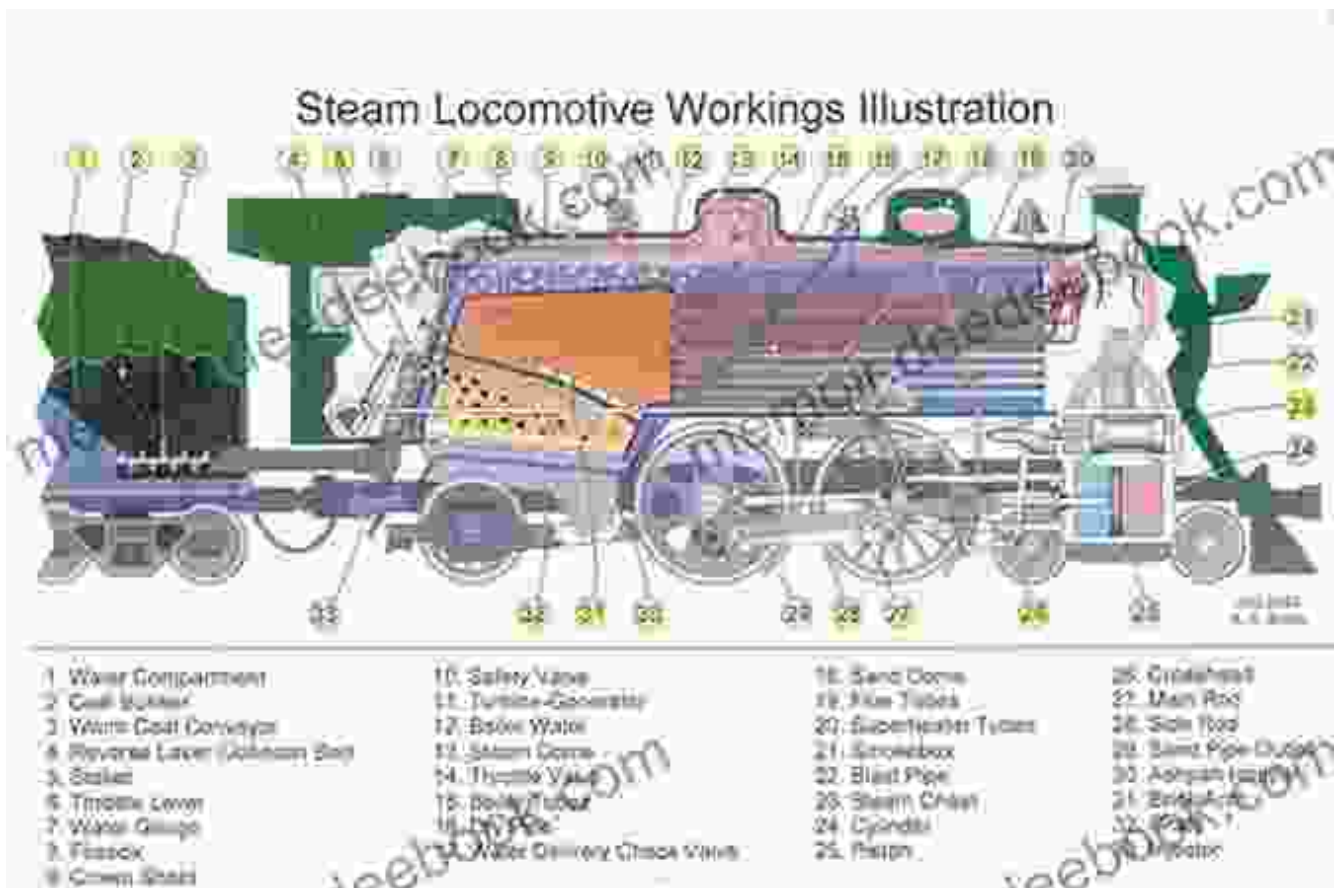


Diagram of a steam locomotive from the Locomotive Cyclopedia of American Practice 1922

Preservation and Legacy

The Locomotive Cyclopedia of American Practice 1922 remains an essential reference work for railway historians, locomotive enthusiasts, and scholars alike. It is a testament to the ingenuity and engineering prowess of the early 20th century. Many of the locomotives described in the encyclopedia have been preserved in museums and heritage railways, providing a glimpse into the era of steam and electric traction.



The Locomotive Cyclopedia of American Practice 1922 is a remarkable achievement in railway literature. It stands as a comprehensive encyclopedia of locomotives, providing a detailed account of the technology and historical context that shaped the transportation landscape of the early 20th century. Its technical insights, historical perspectives, and preservation efforts ensure that this invaluable work will continue to inspire and inform generations to come.

Locomotive Cyclopedia of American Practice:

Locomotives, 1922 by Daiyu Chen

★★★★☆ 4.3 out of 5

Language : English



File size : 73020 KB
Text-to-Speech : Enabled
Enhanced typesetting : Enabled
Print length : 101 pages
Screen Reader : Supported



How to Get a Woman to Pay for You: A Comprehensive Guide to Strategies, Considerations, and Success

In the modern dating landscape, navigating financial dynamics can be a delicate subject. However, with careful consideration and open communication,...



Principles and Theory for Data Mining and Machine Learning by Springer

Data mining and machine learning are two of the most important and rapidly growing fields in computer science today. They are used in a wide variety of applications, from...